
UNIVERSAL DESIGN

Public / Fast Charging Facilities

2023-02-03

Lars K. Bjørnå



EASY CHARGING WHEREVER YOU ARE



ON-THE-GO



WORKPLACE

HOME

How Universal Design?

Definition:

- Universal design is the design of buildings, products or environments to make them accessible to all people, regardless of age, disability or other factors.

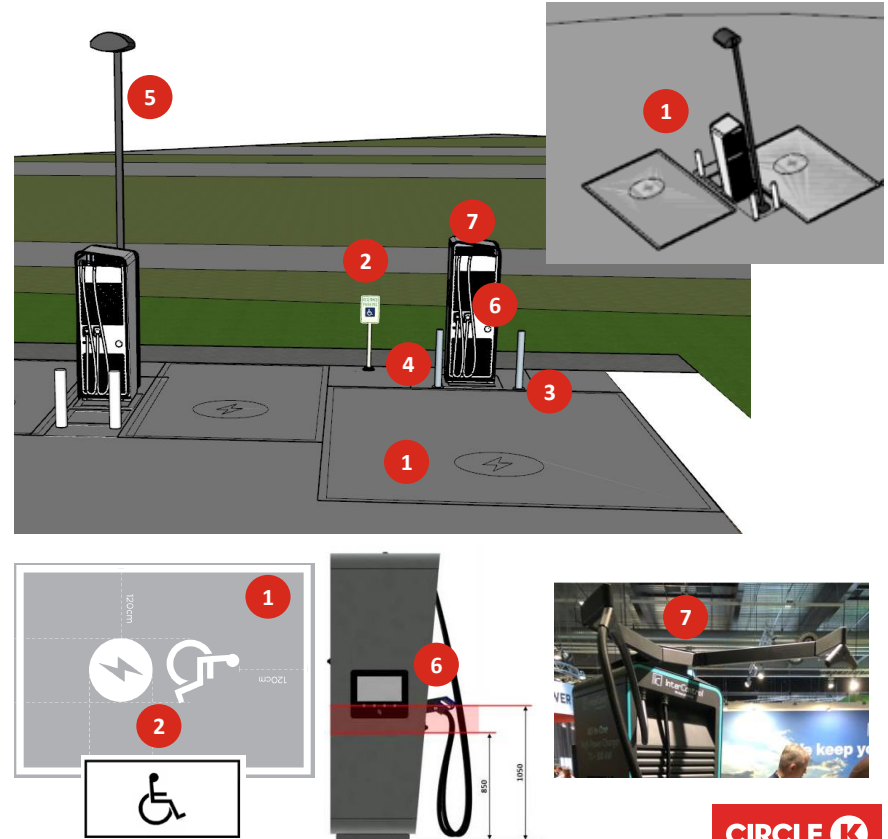
How Circle K react to this:

- Understand that Universal Design can benefit both individuals with disabilities and regular customers
- Build new charger facilities to comply with local/national codes and regulations
- Maintain the charger facilities in order for people with disabilities to easily use the facilities for charging
- Provide help from customer service and site staff to those not be able to charge on their own



Focus On Universal Design @ Public Chargers

1. The number of charge stalls dedicated for disabled persons, and the layout and dimensions for such stalls
2. The signage/markings of such stalls (should comply with any local/national requirements).
3. The charger island with no elevation (to ease access).
4. The crash barriers location (to ease access).
5. The lighting of the charger area (to ensure good visibility of charger instructions and charger operation, and safety).
6. The charger display / operation buttons and plug holder height (should comply with any local/national requirements).
7. The cable management system (to ease the maneuvering of the cables).
8. The support from station staff (through contacting Customer Service)



Thank you

